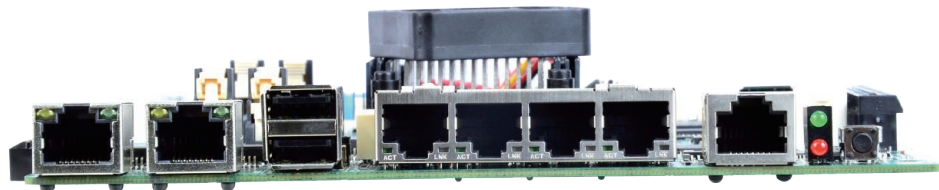
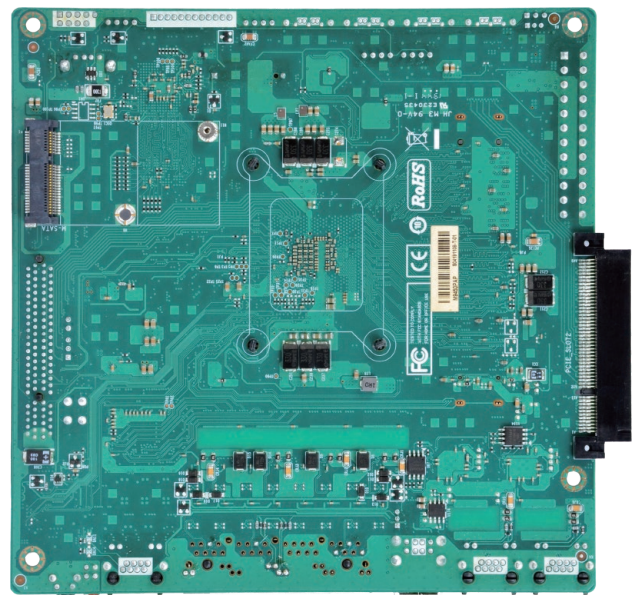
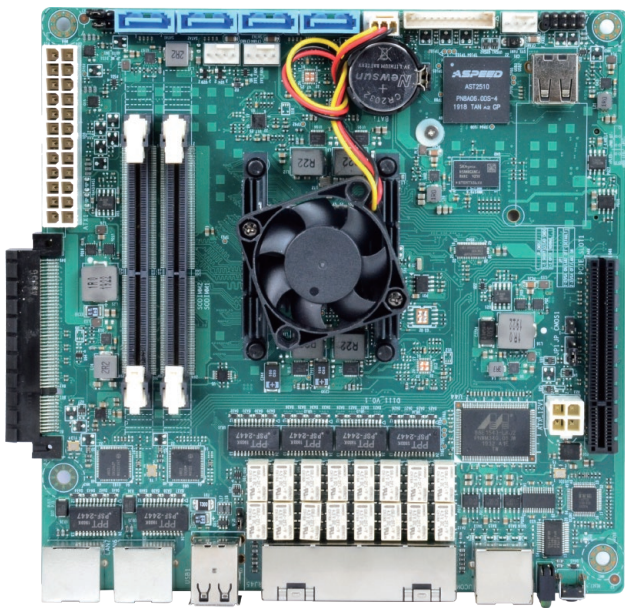




Mini ITX Board with Intel C3000 Series CPU

Features:

- Support Intel C3000 Series CPU
- Support 6 x 1000M Network
- Support PCIe X8 & PCIe X4 Expansion
- Support 2+2 Bypass
- TPM2.0 Onboard



Board Description:

EMB-IC3000D-MI6 is applicable for Internet security, Industrial Control, Digital Signage, Surveillance, Intelligent Retail. It supports Intel C3000 Series CPU, PCIe X8 and PCIe X4 Expansion, 2+2 Bypass and TPM 2.0 function.

Specification :

Processor	CPU	Intel C3338	Intel C3558	Intel C3758	Intel C3858	Intel C3958
	Frequency	1.5G~2.0GHz	2.2GHZ	2.2GHZ	2GHz	2GHz
	Cores	2	4	8	12	16
Memory	Type	SO-DIMM DDR4 2400				
	Support Max Capacity	32G				
Display	GPU	ASpeed AST2510				
	Interface	VGA Port				
Network	Controller	2*Intel I211AT Gbe				
		4*Gbe & 2+2Bypass by Marvel 88E1543				
USB	Rear	2*USB Port				
	Onboard	1*Type-A USB2.0 in horizontal type				
Storage	SATA	4*SATA3.0 Stand SATA Port				
	Mini_PClle	Support MSATA SSD(Share with SATA)				
Serial Port	COM	Support 1*RJ45 to RS232 interface				
Expansion Slot	PCIe X8	1*PCIe X8 Standard & 1*PCIe X8 in horizontal type				
	PCIe X4	Support PCIe X4				
Customize Function		Hardware Restore On AC/Powerloss				
Software	Watch Dog	Support				
	WOL	Support				
Power Supply		Standard ATX Power				
Environmental	Operating Temp	0-60℃				
	Storage Temp.	-20-80℃				
Operation System		Windows Server 2016, Ubuntu				
Size		17 x 17cm				

ABOUT POLYHEX

As a board level and system level designer and manufacturer, Polyhex, with 9 years' experience, always delivers best-in-class embedded computing solutions based on both ARM and X86 architecture, including hardware customization and software debugging etc. Partnered with silicon vendors like Intel, NXP, ST, Rockchip, Allwinners and so on, we have earned trust from clients worldwide in over 30 countries. Polyhex is also certified with ISO9001 and ISO13485 for the self-owned manufacture facility.

