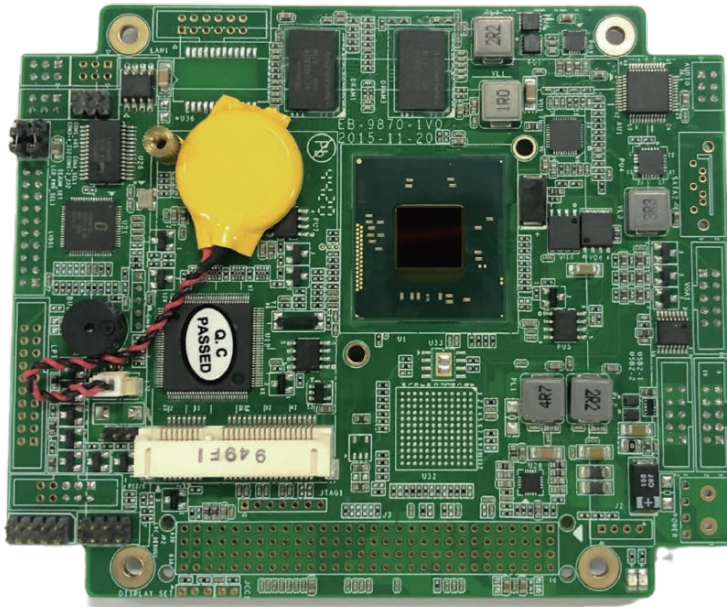




## PC/104 Plus Board Powered by Intel Celeron Processor



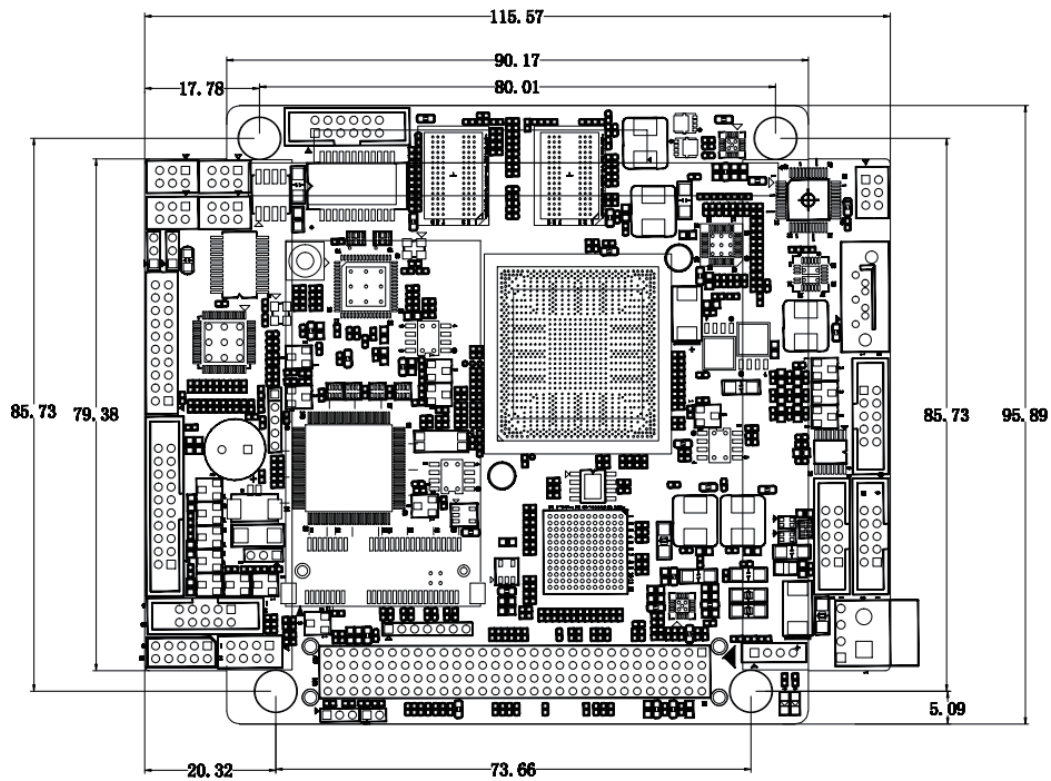
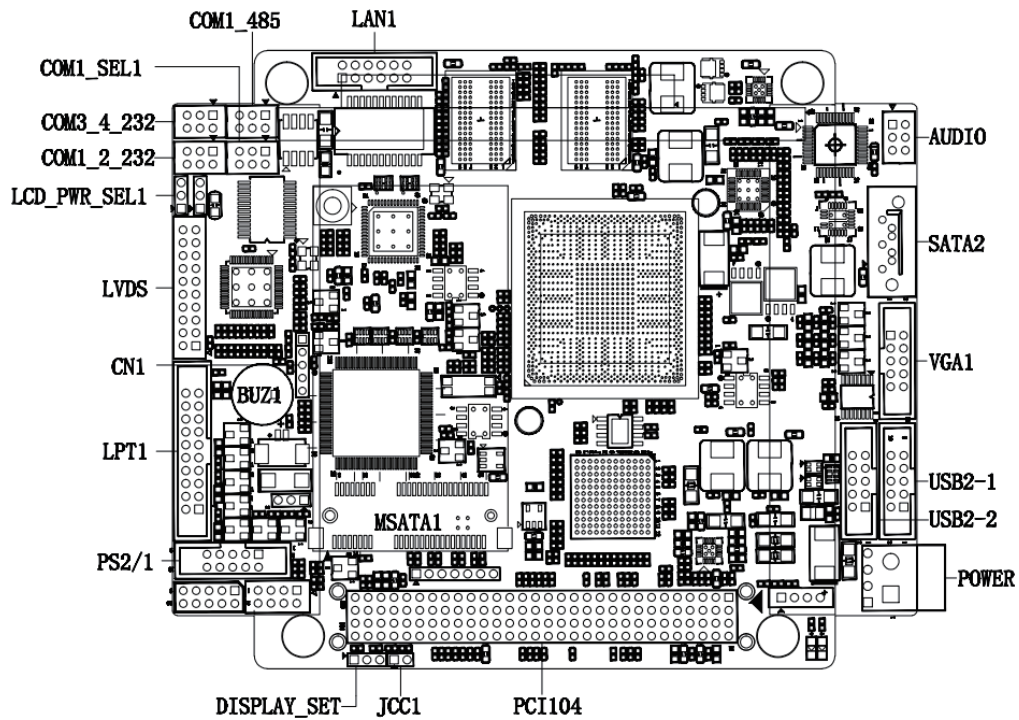
### Description:

EMB-I1900HB-1N4/EMB-I2807HB-1N4/EMB-I2930HB-1N4 is powered by Intel Celeron J1900/N2807/N2930 processor, and is based PC/104 plus bus, which is designed with full consideration of application environment and comprehensive measures, for operate safely, stably and efficiently in a variety of application environments.

### Specification:

<b>CPU</b>	Intel Celeron J1900 4 Cores 2.00GHz Intel Celeron N2807 4 Cores 1.58GHz Intel Celeron N2930 4 Cores 1.83GHz
<b>Expansion BUS</b>	PC/104-Plus
<b>System Memory</b>	DDR3L 2GB OnBoard
<b>Ethernet</b>	1 x GbE Intel LAN
<b>Storage</b>	1 x mSATA + 1 x SATA 2.0
<b>USB</b>	4 x USB2.0
<b>Display Interface</b>	1 x VGA
<b>LVDS</b>	1 x 18/24bit Dualchannel
<b>COM</b>	4 x COM(COM1 RS232/485)
<b>GPIO</b>	1 x LPT1(SPP/EPP/ECP)/GPIO(16)
<b>Expansion</b>	1 x PS/2
<b>Software</b>	Watchdog(L 255)
<b>Power Requirement</b>	12V 800mA(for 1.58GHz)
<b>Operating Temperature</b>	0~+60°C(-25~+70°C/-40~+85°C Optional)
<b>Operating Humidity</b>	5~95%
<b>Storage Temperature</b>	-40~+125°C

### Interface Specification:



### ABOUT POLYHEX

As a board level and system level designer and manufacturer, Polyhex, with 9 years' experience, always delivers best-in-class embedded computing solutions based on both ARM and X86 architecture, including hardware customization and software debugging etc. Partnered with silicon vendors like Intel, NXP, ST, Rockchip, Allwinners and so on, we have earned trust from clients worldwide in over 30 countries. Polyhex is also certified with ISO9001 and ISO13485 for the self-owned manufacture facility.

